

EXAMGLIDE

INSTRUCTION MANUAL



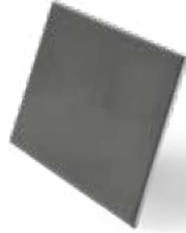
HARDWARE PARTS LIST



Bottom Guide (x1)



Z Clips (x9)



Endcap (x1)



L-Clip (x1)



Pull Handle (x2)



Privacy Lockset (x1)



Planet-SN-RD-A Door Bottom



Filler Bar (x1)



Soft Close with Soft Close Activator



Soft Close

Hanger and Carrier

1: Verify your Opening

Inspect the flooring conditions to ensure the Rough Opening (RO) measures **41 1/2" by 85"**.

Note: This measurement allows for only 1/8" of floor depth variation.

Alternate options involving scribing are possible at an additional 3-5 weeks to the given lead times.

1.2: Validate your Wall Width

Verify wall width does not exceed 1/8" variations in thickness. Standard wall sizes that can be accommodated are 3 3/4", 5", 5 1/4" and 7 1/4". If the wall width surpasses this measurement, arrange for the finishing subcontractor to address any necessary rework.



2: Install Cased Open Frame Aluminum

Proceed with the installation of the cased open aluminum frame according to the standard instructions for conventional aluminum frame installations.

3: Install Track Filler Bar

1/4" x 34 3/8" Mill Aluminum

3a: Align the top of the filler bar with the top of the frame and install.

3b: Shim track as needed so it's flush with the face of trim.



1/4" x 34 3/8" Mill Aluminum

4: Install Track

4a: Position track onto the header. Align the end of track with the inside of the receiver frame leg. Mark the precise locations for notches on both the trim and filler bar.



4b: Pre drill holes for the z-clips using a 1/8" drill bit. Then, screw z-clips into place.

Note: Pre-drilling is only necessary for the frame and filler bar, ensure that the screws pass through the framing backing.



4c: Mount track on z-clip and slide towards the tail end of the opening until it locks.

Note: Use non-marring rubber mallet to gently tap track into place.



5: Install Receiver Post and Receiver

5a: Position receiver post at strike jamb. Mark location for z-clips on trim.



5b: Slide post receiver onto z-clips. Make sure receiver slides down and touches floor.



5c: Present the receiver channel onto the receiver post. Mark the center of the holes with a pencil. Pilot drill with 1/8" drill bit, then fill in screws.



5.2: Install Seals

Pemko S773 at receiver,
Pemko S88 at center post.

6: Load Wheels onto Track

6a: Install, preload and adjust soft open and close.

6b: Install endcap by screwing into place.



7: Install Threshold

Screw threshold into place onto the floor.



8: Hang Door on Track

Before Hanging Door: Apply Pemko S771 to the inside face of the back of the door.



8a: Hang door onto track.



Pemko S771



8b: Insert hanger into door.

9: Install Bottom Guide



Remove the leading edge hanger. Close the door and mark the edge of door on the tail end. Install bottom guide by screwing into place.



Lift door and set onto guide. Then re-attach hanger by sliding into door.



10: Adjust the Reveals and Stops

Verify the drop bottom (if any) seals properly. If door is **too low or too high**, adjust hanging device as needed by removing the door from the hanging device, tightening or loosening with a screwdriver, then re-mounting the door.

11: Install Locking Hardware and/or Back-to-Back Pull

Proceed with installing the locking hardware and pull handles as described in their separately included instruction manual.





Visit www.waltersandwolfinteriors.com for more